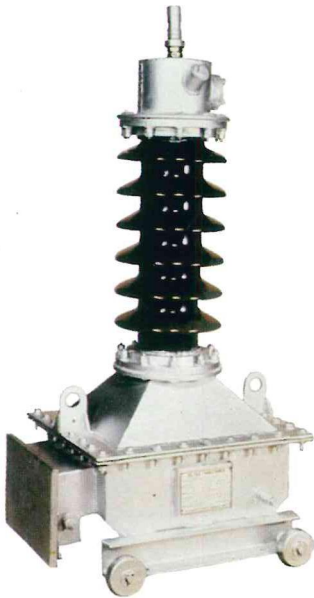


OUTDOOR VOLTAGE TRANSFORMERS AND CONTROL TRANSFORMERS

OIL IMMERSED VERSIONS

Three phase VT, RVT, single pole and double pole types

- Upto 36 KV system
- Complete with enclosure , porcelain insulator of creepage suitable for polluted or heavily polluted conditions, first filling of oil, hot dip galvanized hardware



TYPE : VAO - 216 - 02

36/70/170 kV single pole oil immersed VT



VAO - 133 - 01
(Max.Weight - 85 Kgs.)

12/28/75 kV three phase VT

OUTDOOR CAST RESIN VOLTAGE TRANSFORMERS

- Single pole and double pole versions available
- Upto 36 kV system
- Double pole control transformer version suitable for auto-reclosing, with controlled regulation at Inrush
- High creepage, suitable for heavily polluted conditions
- Cast in toughened UV proof cyclo-aliphatic resins
- Can be offered in hydro-phobic versions, suitable for areas with heavy precipitation

Model 2472 VEC 323 01
15/38/110 kV, creepage 610 mm



Model 2460 VEC 313 01
15/38/95 kV, creepage 445 mm



Model 3460 VEC 313 02
36/70/200 kV
Creepage 1325 mm

